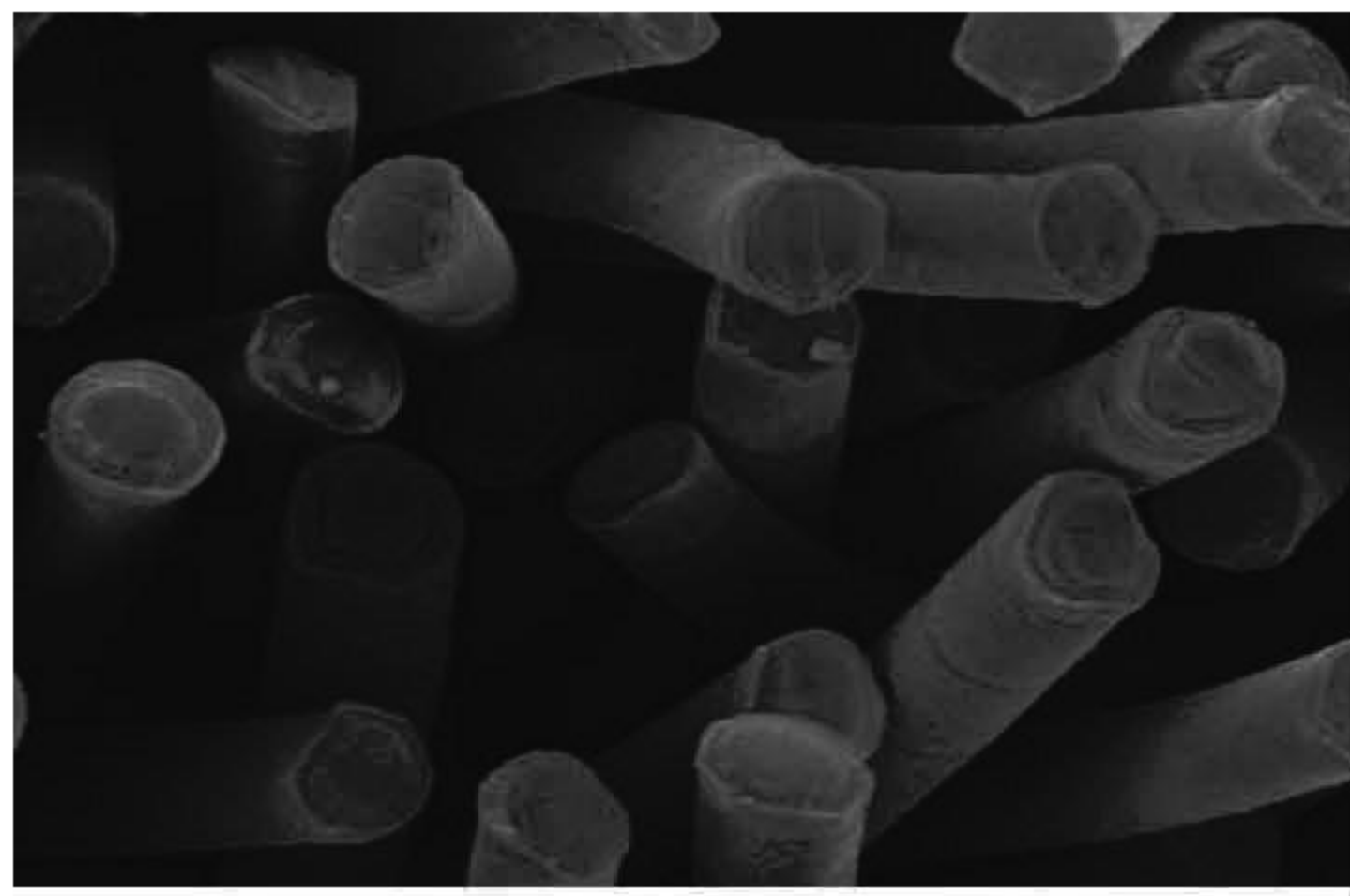


# LMF ( Low Melting Fiber )

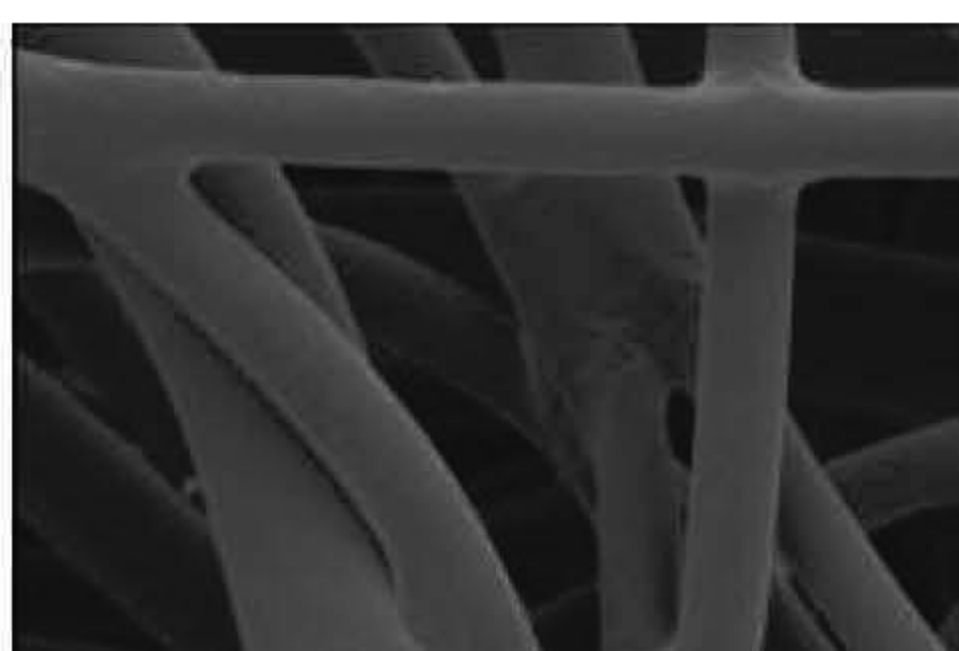
## 01 ) Specialties



- Type** >Non Woven
- Sub-Type** > LM
- Features** >Excellent Bonding Properties, Excellent Durability, Easy Mixing Properties with other Fibers, Excellent Resilience
- Applications** >Automotive Use, Bedding, Industrial Use, Hygienic Materials

### "Low Melting Bonding Fiber"

LMF, which is produced by bicomponent spinning of general polyester and modified polyester, can be melted at lower temperature(110~200℃) than normal fiber and bonded with other fibers.



Bonded with other fibers



Non-woven fabric made with LMF

## 02 ) Advantages

- Excellent Bonding Properties  
LMF provides diverse melting points generated through controlling seath part (modified polyester)
- Excellent Durability  
The bonding strength after being combined with other fibers hold out semipermanently.
- Easy Mixing Properties with other Fibers  
Homogeneous properties between LMF and various Fibers make blending easy on line.
- Excellent Resilience  
The formation of non-woven fabric made with LMF is simple and excellent.
- LMF can be recycled.

## 03 ) Applications

- Automotive Use: Car-Interior, Doortrim
- Bedding: Mattress, Quilting, Padding
- Industrial Use: Engineering Material, Construction Material (Soundproofing, Insulation), Filter
- Hygienic Materials: Hygienic Bonding, Clothing

## 04 ) Production Item

Type	Luster	De'	Length(mm)	Melting Point	Remarks
LMF	SD	2/4/6/10/15	32~102	110, 130, 150, 180, 200℃	PET/PET

